

Indian Heritage Group



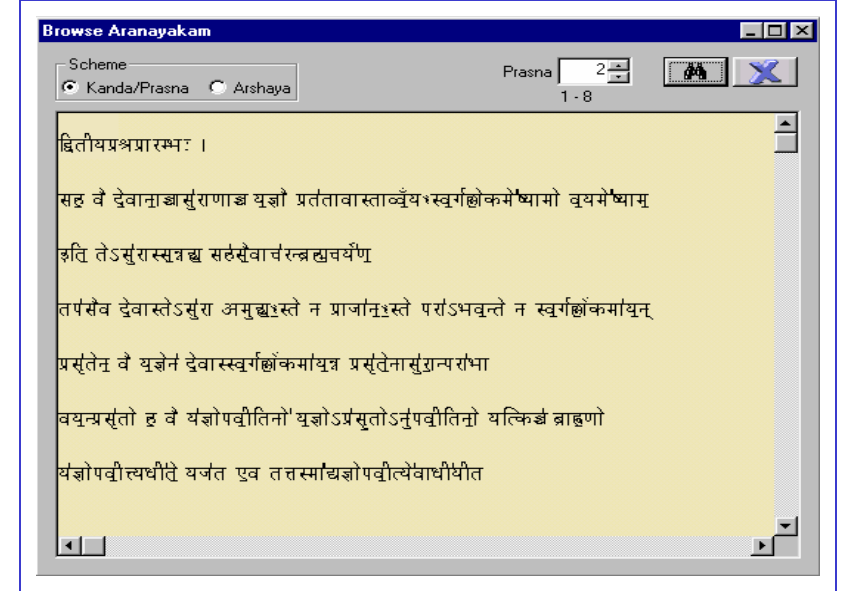
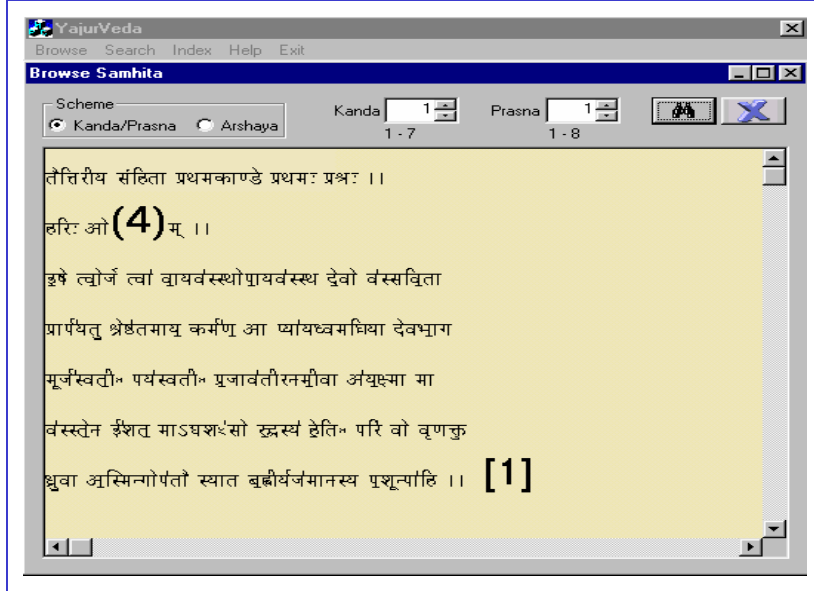
YajurVeda

Vedas are four in number, usually likened to a tree with four major trunks and branches (Śākhās) further in each trunk. Among these, Ṛg Veda had 27 Śākhās, Yajur Veda initially divided into two major sub-types as Śukla (white) and Kṛṣṇa (black) had 15 and 86 Śākhās respectively, Sāma Veda had 1000 Śākhās and Atharva Veda 9 Śākhās.

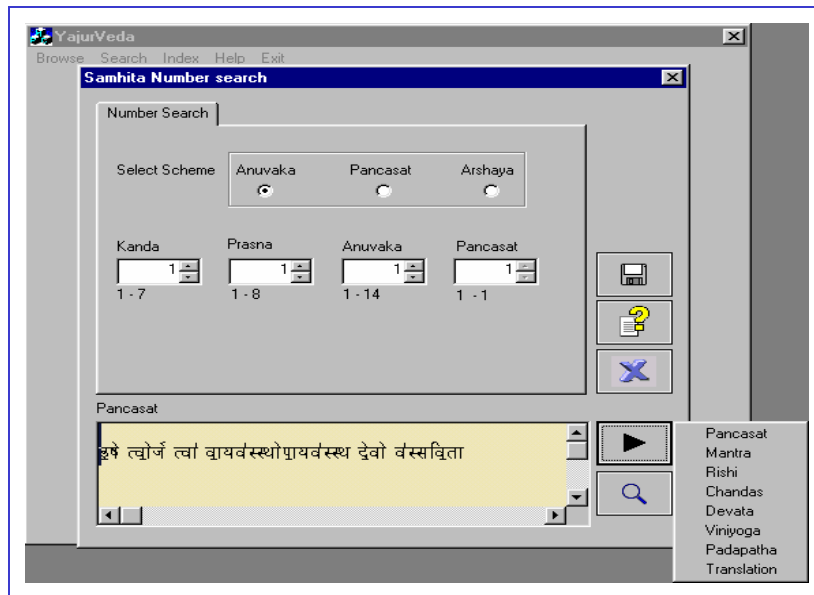
Currently, only two Śākhās of Ṛg Veda (there too, one of them is not very significantly different from the popular one), two in Śukla Yajur Veda, four in Kṛṣṇa Yajur Veda, **three in Sāma Veda (of which one has followers in single digits), and two in Atharva Veda (here also the number of reciters is in single digits)** are surviving in tradition. The various Vedas and their Śākhās being recited by various schools depend also upon geographical locations with the highest concentration in South India (Tamil nadu, Andhra Pradesh, Karnataka, Maharashtra and Kerala) and more sparse distribution elsewhere.

In every Vedic Śākhā, there are four types of texts called the **Samhitā** (to which portion only Pada-pātha, Vikṛtis and Varṇa-krama apply), **Brāhmaṇa**, **Āraṇyaka** and **Upaniṣads**. There are special Vedic grammar rules for each Śākhā called 'Prātiśākhya' and phonetic rules known as 'Śikṣā'. There are also other 'Lakṣaṇa Grantha's which deal with accent combinations (Sandhi), Vikṛti formation etc. for a particular Śākhā.

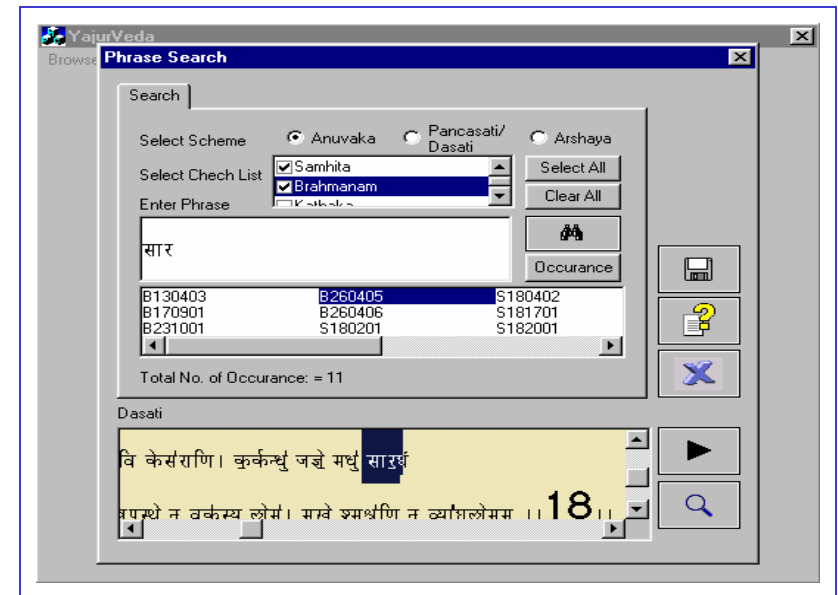
Indian Heritage Group



Indian Heritage Group

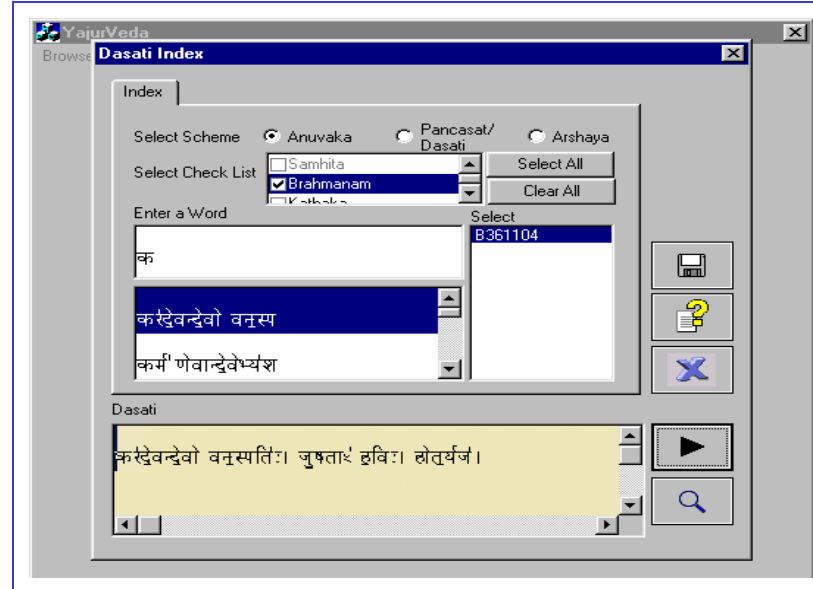


Number search choosing Anuvaka/Panchasat/Arshaya schemes



Phrase search choosing Anuvaka/Panchasat/Arshaya schemes

Indian Heritage Group



Index on Dashati scheme

Indian Heritage Group

Onscreen Keyboard

RgVeda and Yajurveda Keyboard Layout

Q	W	E	R	T	Y	U	I	O	P	[
A	S	D	F	G	H	J	K	L	;	-
Z	X	C	B	N						

Keep Caps Lock on to type in Sanskrit.
 Keep Caps Lock on and Shift to type in Sanskrit.
 Keep Caps Lock off to type English.
 Keep Num Lock on to type accents.

SamaVeda Keyboard Layout

~`	1	2	3	4	5	6	7	8	9	0	-	=	←
Tab	Q	W	E	R	T	Y	U	I	O	P	[]	\
Caps Lock	A	S	D	F	G	H	J	K	L	;	'	Enter	
Shift	Z	X	C	V	B	N	M	<	>	?	Shift		
Ctrl	Alt							Alt				Ctrl	

Exit

On screen keyboard will help the user in typing Vedic accents for RgVeda, Yajurveda, Samaveda.